

RS Lighting Design / Randy Sabedra

With over fifteen years of interior and exterior architectural lighting design experience, Randy Sabedra is not only recognized for his award winning projects, but is also known in the design community as an educator of light. He is proficient in providing lighting services for design concepts, including schematics, construction documents, and construction administration.

Randy began his career at the lighting design firms of *H. M. Brandston & Partners* and *Kugler Tillotson Associates*, where he was the lead designer on a wide variety of projects. He received a Bachelor of Architecture from *California Polytechnic State University* at San Luis Obispo, California and studied subsurface architecture at the *Ecole des Beaux-Arts* in Fontainebleau, France. He is currently a studio instructor in the Masters Lighting Design Program at *Parsons School of Design* in New York City and has been a guest critic at the *New York School of Interior Design*.

Teaching Experience

- Studio and Technical Instructor at Parson's School of Design, *Master in Lighting*– since 1995
- Lighting Instructor at Parson's School of Design, *Associates Degree in Interior Design*– since 2002
- Illuminating Engineering Society, New York Section
Vice President – *current, President - 2005 thru 2007*
Education Chairman and Instructor of "Learn the Tools of Lighting" - *since 2003*
Co-Chair, Student Design Grant Competition – *thru 2002*

Awards

- 2003 IES Lumen Award for the Schlumberger Offices in New York
- 1998 IES Lumen Award for the North Cove Pylons at Battery Park City in New York
- 1996 IES Lumen Award for the kinetic illumination of the Glass Block Tower in Miami
- 1994 IALD Citation for One Peachtree Tower in Atlanta
- 1991 IES Lumen Award for the Bulgari Jewelry Store in New York
- 1991 IALD Award of Excellence for the Bulgari Jewelry Store in New York



Publicis Offices
New York, New York





*Feirstein Capital Management Offices
New York, New York*

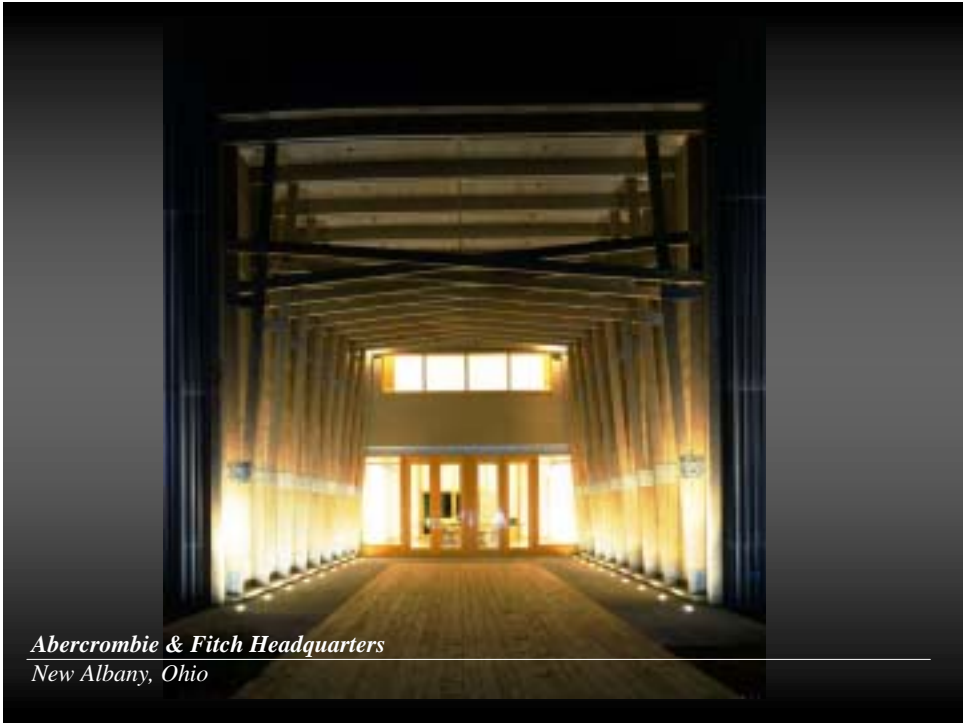




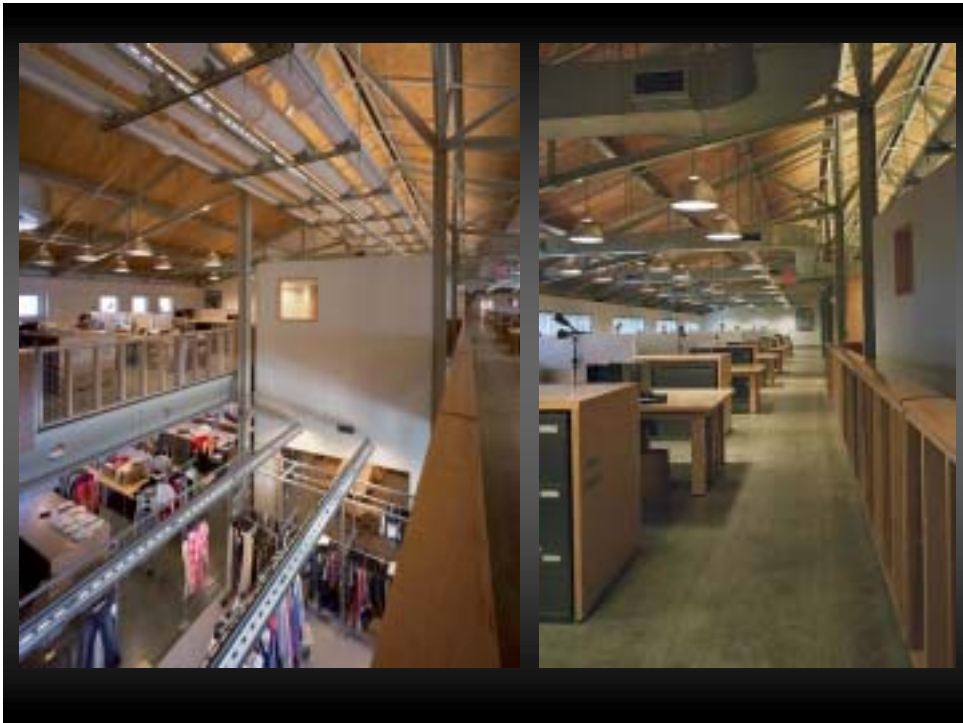


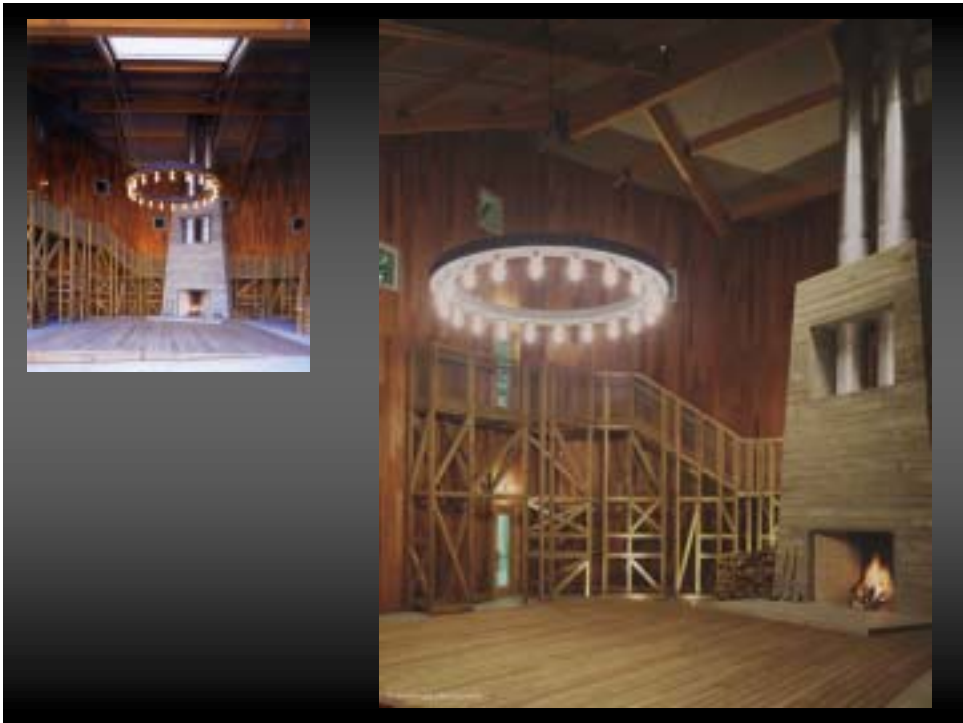


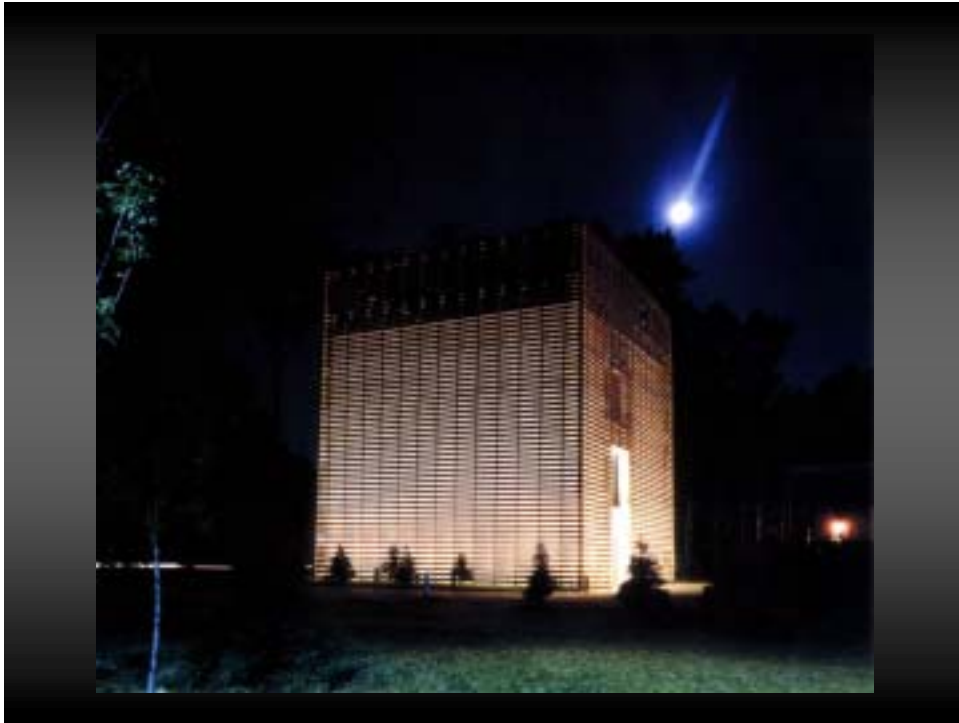


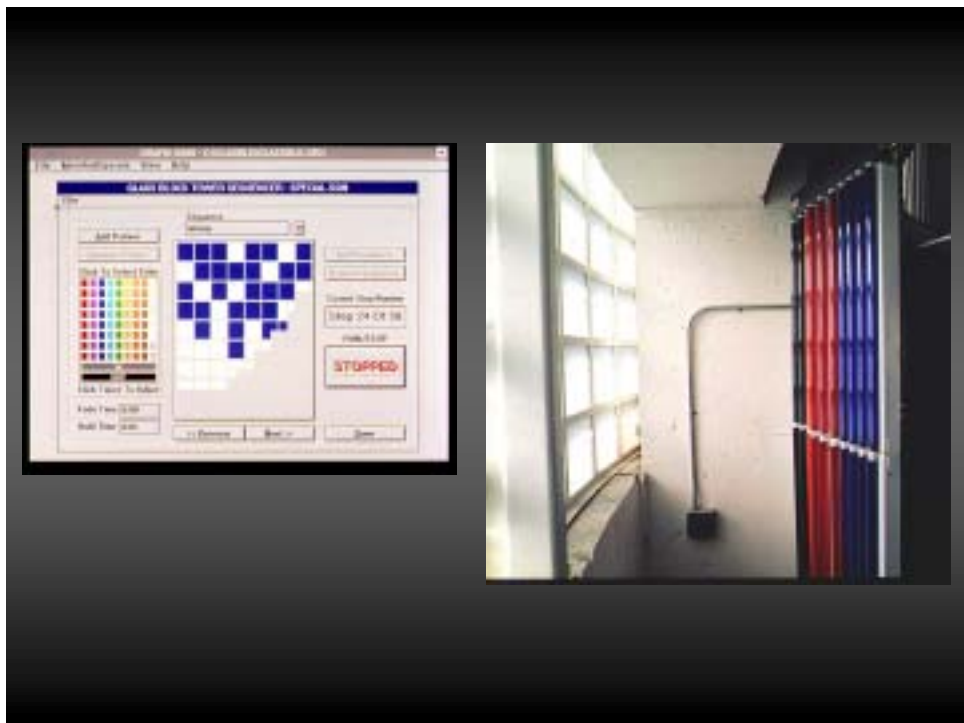


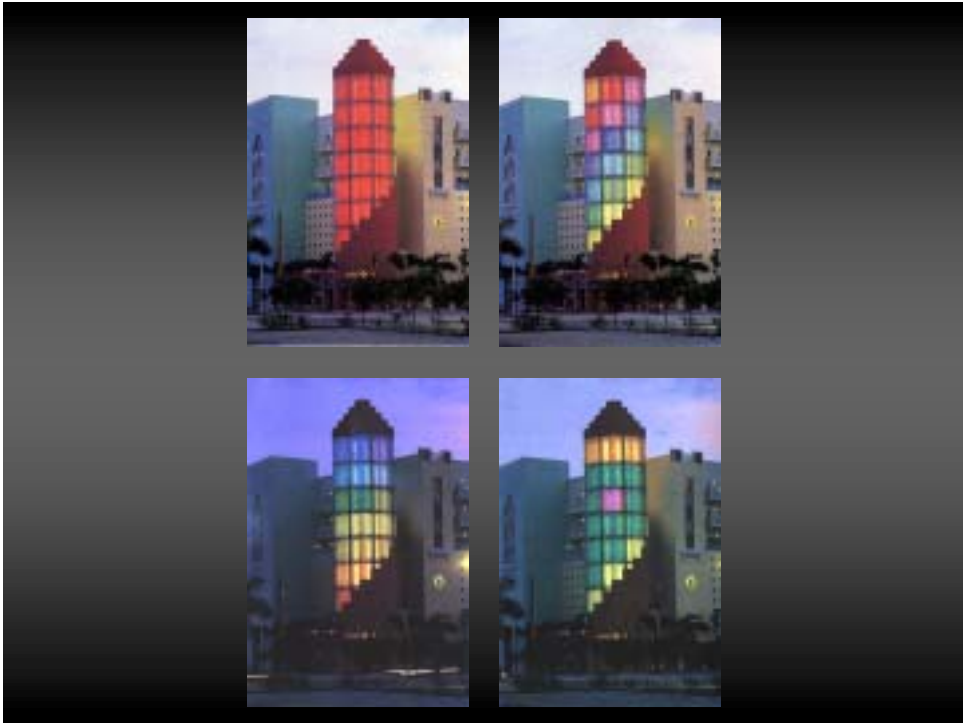
Abercrombie & Fitch Headquarters
New Albany, Ohio

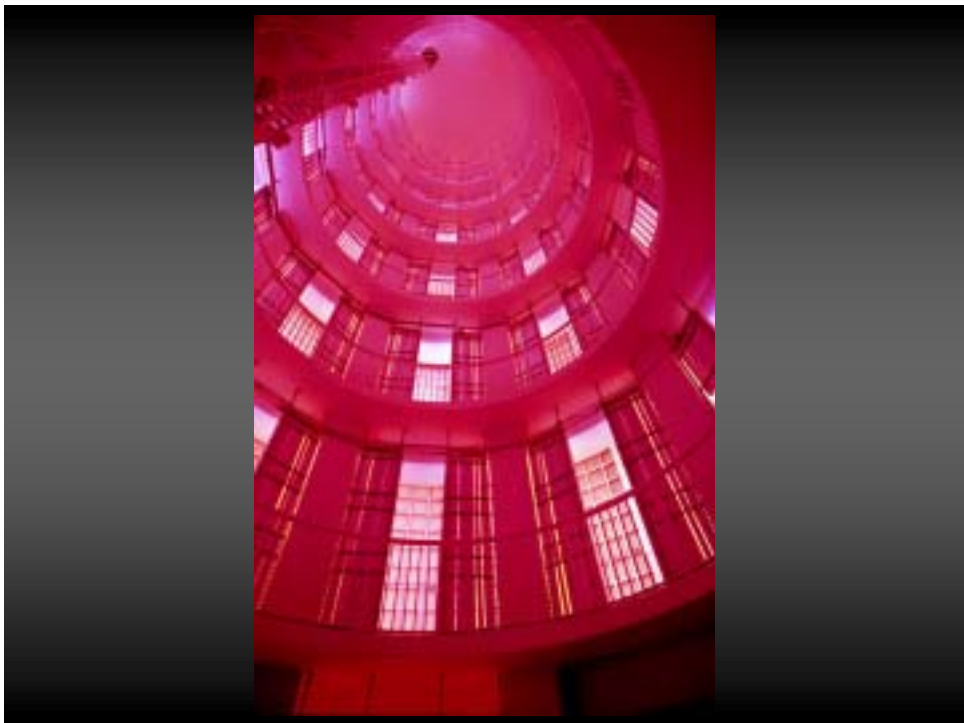
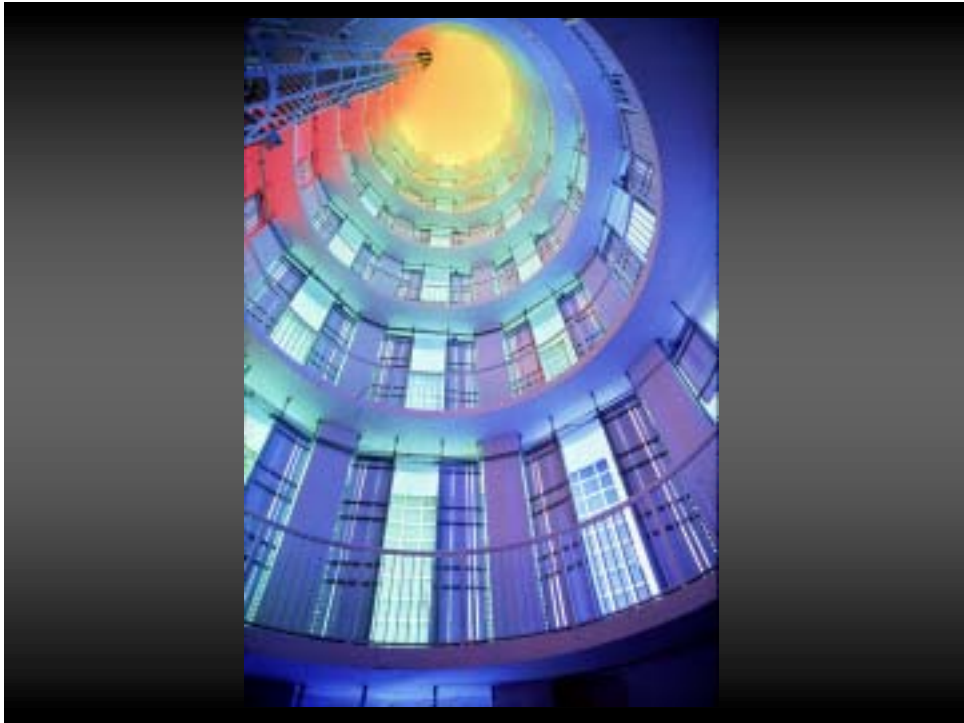


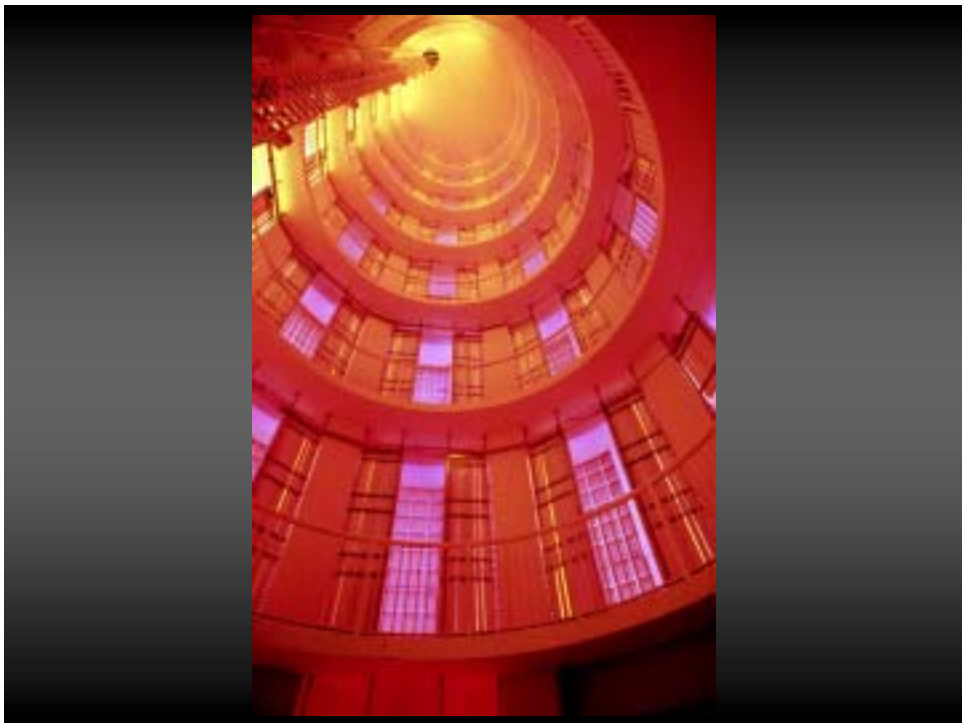
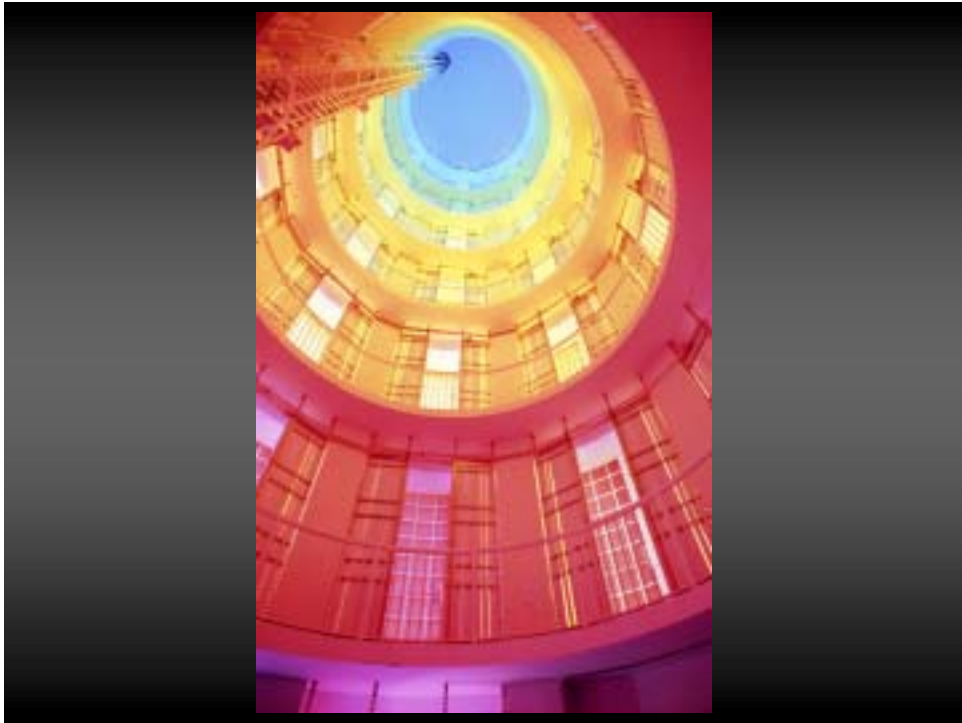








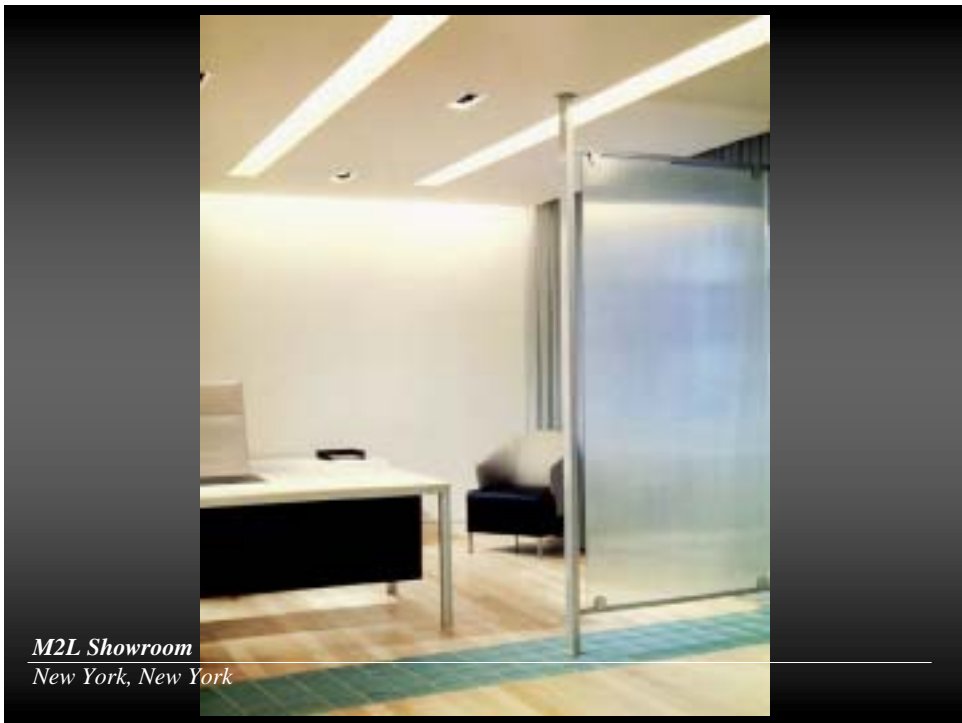




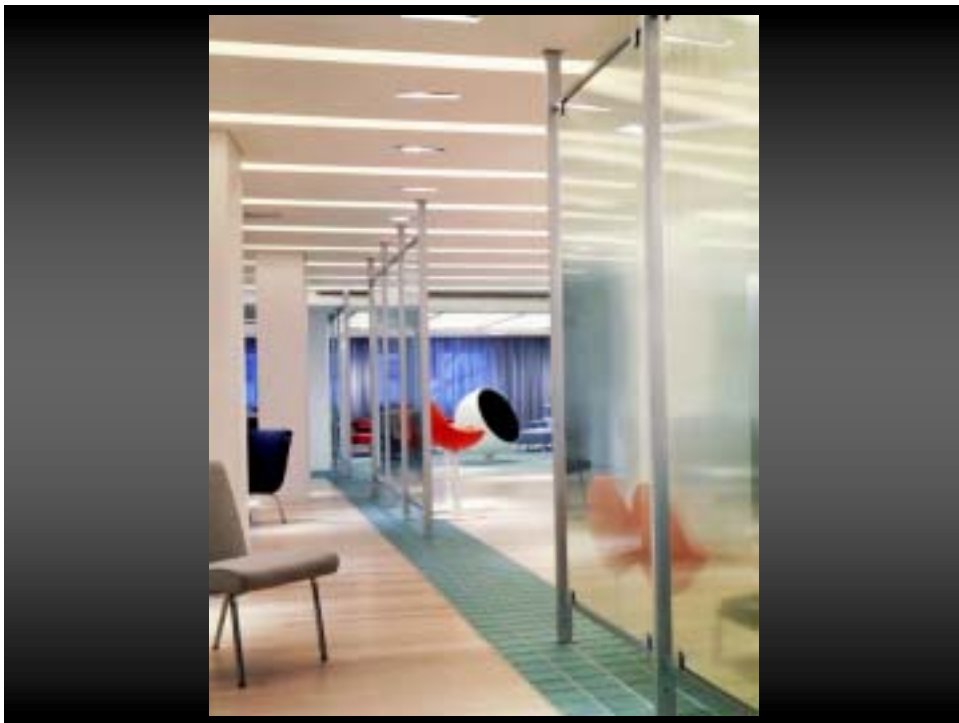








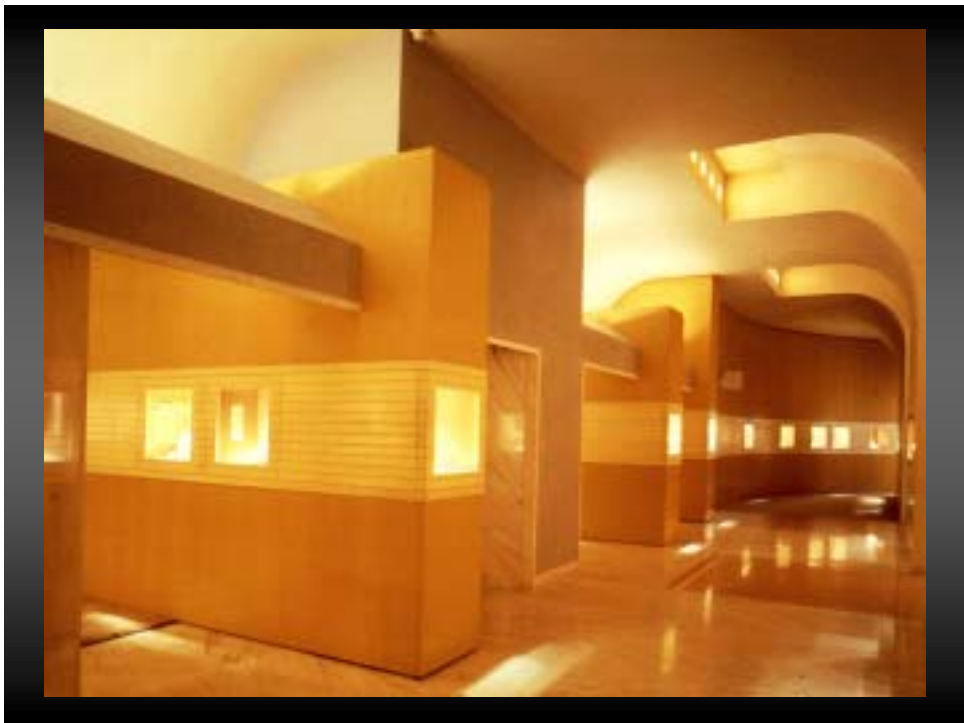
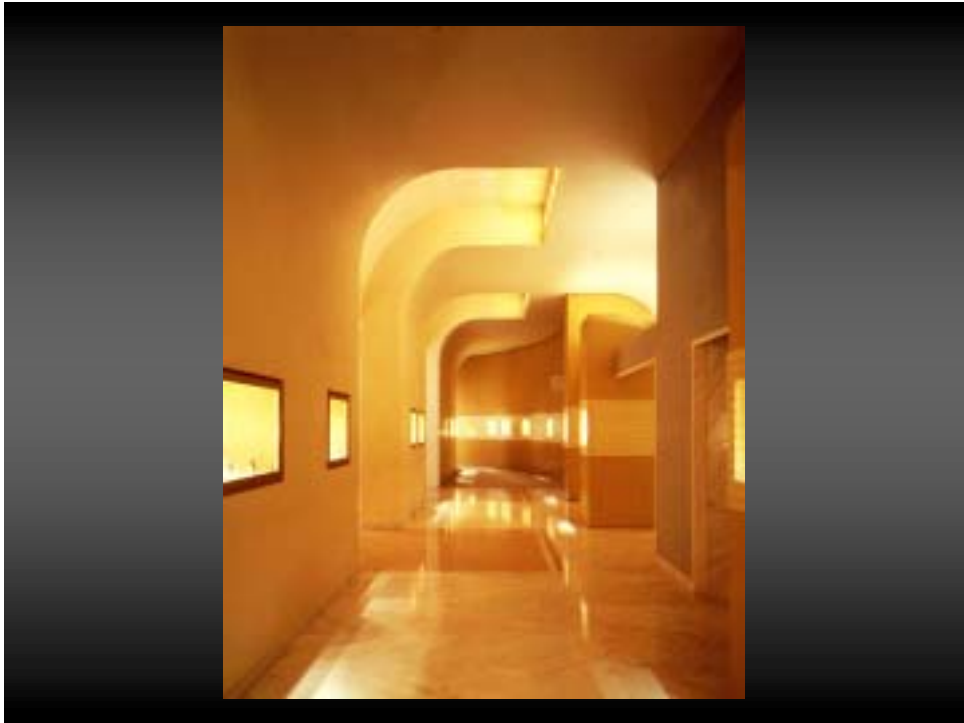
M2L Showroom
New York, New York

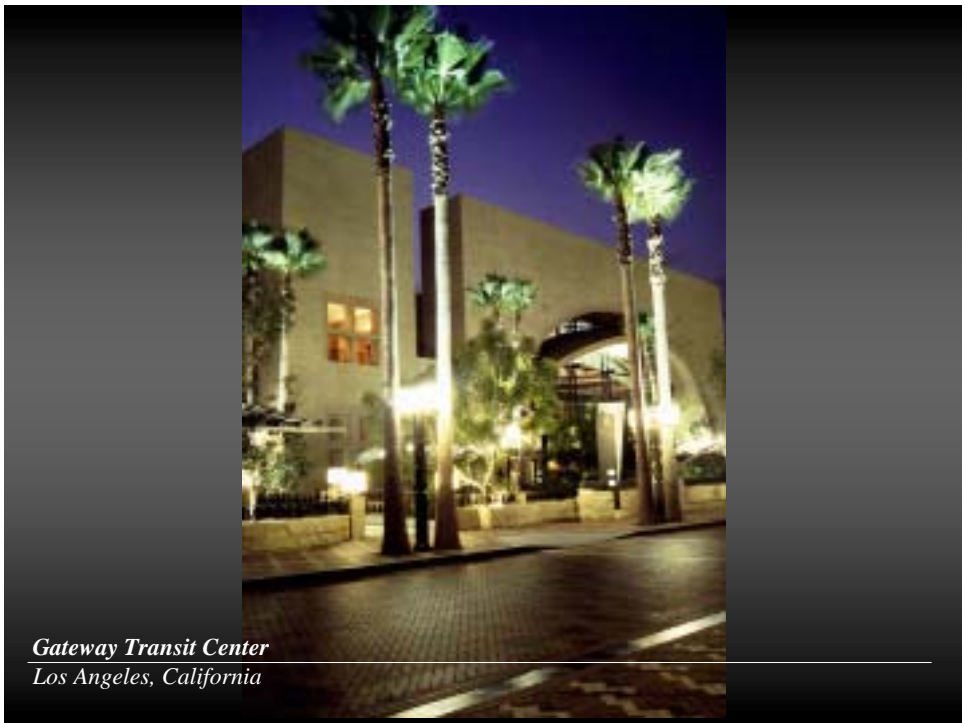




Bulgari Jewelry
New York, New York







*Gateway Transit Center
Los Angeles, California*





*Marriott Marquis Fitness Center
New York, New York*

